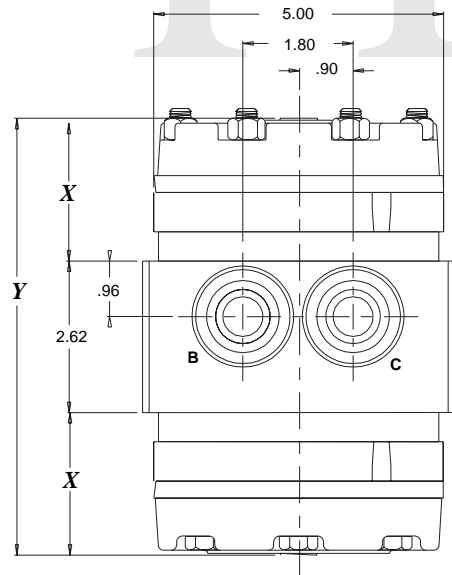
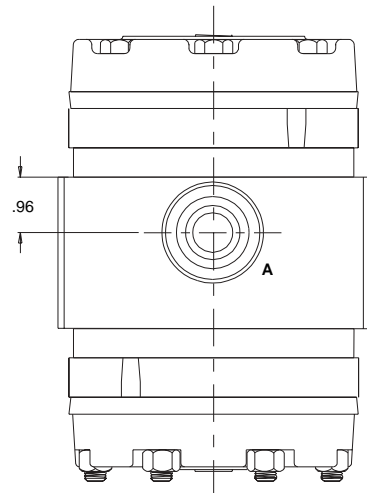
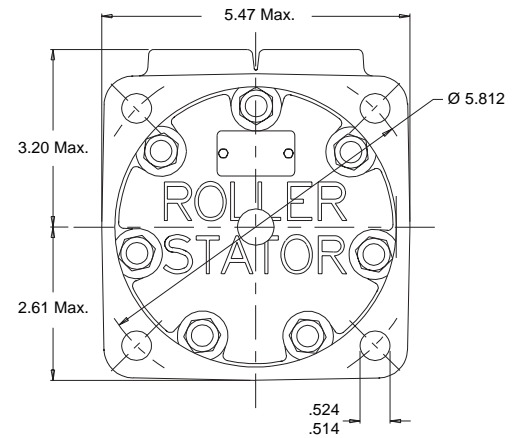




- 3,000 psi maximum pressure
- 2,500 psi maximum pressure differential between outputs



White Hydraulics flow dividers represent an ingenious use of the patented Roller Stator® gerotor assembly. These highly effective devices use a common housing to supply the input flow to two gerotor assemblies linked by a common drive link. By linking the two gerotor assemblies together, accurate splitting of the flow is assured. These flow dividers use no bearings or rotating seals, eliminating the typical failures in other designs. By using the highly efficient Roller Stator® gerotor elements, high efficiencies are maintained, even at low flows. Because White Hydraulics flow dividers work at much lower RPMs than most gear dividers, they are noticeably quieter. These flow dividers are an excellent way to synchronize cylinders or motors. Because they tolerate higher output pressure differentials than other designs, they may also be used for pressure intensification by connecting one output to tank.



Model	Flow Range GPM	X (in)	Y (in)	Weight (lbs)
950320M8699AAAAA	2-10	2.32	7.16	34.0
950600M8699AAAAA	10-30	2.78	8.08	37.4
950750M8699AAAAA	30-40	3.03	8.58	39.6

FD weights vary ± 1 lb.

Caution: Flow dividers are not available with internal relief protection. In-line relief protection for the output lines should be provided due to the possibility of encountering pressure intensification if pressure in one outlet line drops dramatically.

- A (Inlet) 1-1/16"-12 O-ring
- B, C (Outlets) 1-1/16"-12 O-ring

ORDERING INFORMATION

PRESSURE DROP

