



## Fixed Displacement Checkball Piston Pumps For Water-Based Fluids

**PF4300 SERIES**  
2.2 to 8.2 gpm (8,3 to 31,0 L/min) at 1800 rpm  
8000 to 15 000 psi (560 to 1040 bar)

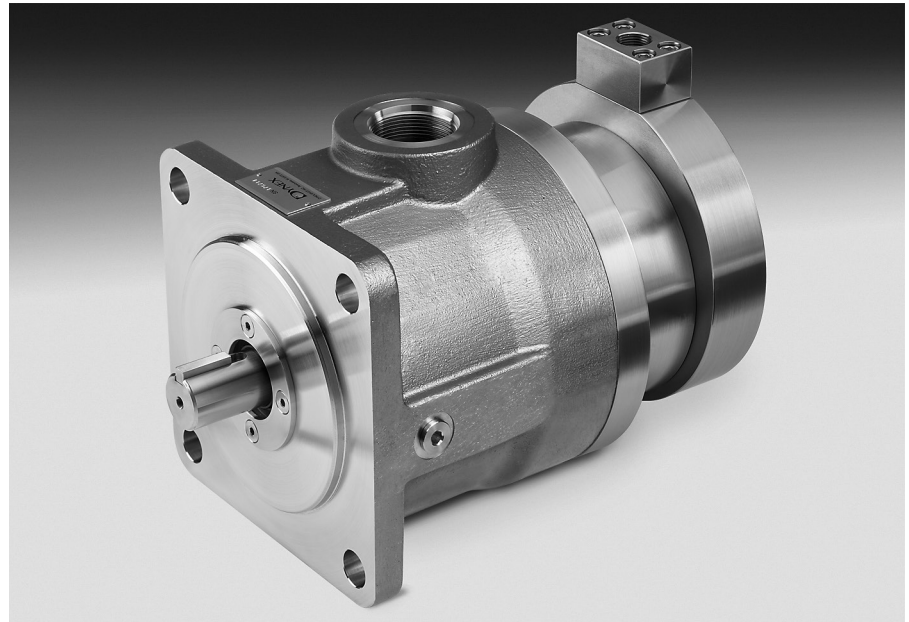
These corrosion resistant, stainless steel pumps are compatible with a variety of water-based and other low-viscosity fluids. Bi-directional shaft rotation provides constant direction of output flow regardless of drive shaft rotation.

### MAINTENANCE-FREE DESIGN

The single-fluid checkball design uses the pumped fluid for internal bearing lubrication. This eliminates the potential for fluid cross-contamination, possible in other designs with isolated lubrication. It also avoids the cost of a lubrication circuit.

### RELIABLE HIGH PRESSURE

Individual piston check valves take the place of the rotating barrel/valveplate in other pump designs. This means fewer wear surfaces, greater resistance to cavitation damage, and higher volumetric efficiency.



### SPECIFICATIONS

Pump Models	Number of Pistons	Output Flow at 1500 rpm <sup>①②</sup>		Output Flow at 1800 rpm <sup>①②</sup>		Theoretical Displacement		Maximum Pressure		Maximum Speed <sup>②</sup>
		U.S. gpm	L/min	U.S. gpm	L/min	CIR	CCR	psi	bar	rpm
PF4303(Q)-23	3	1.8	6,8	2.2	8,3	0.33	5,43	8000	560	1800
PF4304(Q)-23	3	2.7	10,2	3.2	12,1	0.47	7,68	8000	560	1800
PF4305(Q)-23	5	3.1	11,7	3.7	14,0	0.55	9,05	8000	560	1800
PF4306(Q)-23	6	3.7	14,0	4.5	17,0	0.66	10,86	8000	560	1800
PF4308(Q)-23	5	4.4	17,0	5.4	20,4	0.78	12,80	8000	560	1800
PF4309(Q)-23	5	5.0	18,9	6.0	22,7	0.87	14,30	8000	560	1800
PF4310(Q)-23	5	5.7	21,6	6.8	25,7	0.98	16,12	8000	560	1800
PF4312(Q)-23	6	6.8	25,7	8.2	31,0	1.18	19,34	8000	560	1800
PF4303H-23	3	1.7	6,4	2.0	7,6	0.33	5,43	15 000	1040	1800
PF4304H-23	3	2.6	9,8	3.1	11,7	0.47	7,68	12 000	830	1800
PF4305H-23	5	3.0	11,4	3.6	13,6	0.55	9,05	10 000	700	1800
PF4306H-23	6	3.6	13,6	4.4	16,7	0.66	10,86	10 000	700	1800
PF4308H-23	5	4.3	16,3	5.3	20,1	0.78	12,80	10 000	700	1800
PF4309H-23	5	4.9	18,5	5.9	22,3	0.87	14,30	10 000	700	1800
PF4310H-23	5	5.6	21,2	6.7	25,4	0.98	16,12	10 000	700	1800
PF4312H-23	6	6.7	25,3	8.1	30,7	1.18	19,34	10 000	700	1800

① Output flow based on typical performance using 33 SUS (1,9 cSt) water glycol fluid at maximum pressure with pressurized inlet where required. Refer to the "Minimum Inlet Pressure" table on page 2.

② Contact the Dynex Sales department for a review of applications requiring operation below 900 rpm.

## TYPICAL APPLICATIONS

These pumps are ideal for use in wellhead safety control systems and other subsea applications, providing long life operating at high pressures with water-based fluids.

They are also used on hydroform presses, and other applications requiring environmentally-friendly or fire-resistant fluids.

## PUMP SELECTION

The table on the previous page shows specifications for standard pressure models, and for high pressure “H” option models for maximum pressures to 15 000 psi (1040 bar). The “H” option requires high pressure coned and threaded or BSPP outlet ports.

Standard pressure models with improved suction capability (“Q” option) are available. Refer to *Minimum Inlet Pressure* table.

Refer to *Typical Model Code* on page 7 to specify shaft, seal and outlet port options.

## INSTALLATION AND OPERATING

Refer to *Checkball Pumps Service, Installation and Operating Instructions* on the Dynex website.

All dimensions are shown in inches (millimeters in parentheses) and are nominal.

### Mounting

SAE D 4-bolt pattern with 0.25 inch (6,4 mm) pilot engagement.

### Shaft Options

Standard keyed shaft, 1.250 inch (31,75 mm) diameter.

Optional spline shaft, 1.248/1.247 inch (31,7/31,67mm) diameter standard SAE 14 tooth, 12/24 DP 30° involute spline.

### Outlet Port Options

Full flow and Split-Flow® models are available with the following options:

Standard pressure models have SAE ports. High pressure “H” option models require the use of outlet port option “A” (Autoclave Medium Pressure, Butech M/P or equivalent fittings), or outlet port option “B” (British Standard Pipe Parallel fittings).

As shown, the outlet port on these pumps is machined in a block integrally mounted to the pump barrel. Refer to *Typical Model Code* on page 7 to specify the port.

## MINIMUM INLET PRESSURE<sup>①②</sup>

**IMPORTANT:** Pumps may require pressurized inlet conditions at higher speeds. Failure to meet minimum inlet requirements will result in flow reduction. Refer to the table.

Pump Models	Operating Speed					
	1200 rpm		1500 rpm		1800 rpm	
	psig	bar(g)	psig	bar(g)	psig	bar(g)
PF4303, PF4305, and PF4306	0	0	0	0	0	0
PF4304 and PF4308	0	0	0	0	5 (.5)	0,4 (0,03)
PF4309	0	0	5 (0)	0,4 (0)	10 (1)	0,7 (0,07)
PF4310 and PF4312	0	0	5 (0)	0,4 (0)	15 (2)	1,0 (0,14)

① Values shown are based on fluid viscosity of 33 SUS (1,9 cSt) and related to 1 atmosphere (29.92” Hg).

② Values in parentheses are for “Q” option.

## HYDRAULIC FLUID VISCOSITY GUIDELINES<sup>①</sup>

Operating					
Minimum		Maximum		Start-up	
SUS	cSt	SUS	cSt	SUS	cSt
32	1,5	927	200	927	200

① If fluid conditions fall outside of the range shown, contact the Dynex Sales department.

## Orientation/Drive

Shaft horizontal with inlet vertically up is preferred. Vertical shaft mounting is possible, but requires connecting a line to the bleed port in the pump housing.

## Seal Options

Standard seals are Buna-N (Nitrile) with Polyurethane (Disogrin®) o-rings in the cover. Options include Fluorocarbon (Viton® or Fluorel®) with Polyurethane (Disogrin®) o-rings in the cover, all Fluorocarbon with high pressure shaft seal, or EPR seals for use with some phosphate ester fluids.

Refer to Typical Model Code on page 7.

## Fluid Cleanliness

Minimum: NAS 1638 Class 9

ISO 4406 20/18/15

Optimal: NAS 1638 Class 6

ISO 4406 19/15/12

If a system component fails resulting in fluid contamination, it is important to drain and clean the reservoir, all lines, filter screens and all components. Refill with new fluid.

## Weight (Mass):

116 lb (53 kg).

## FLUID RECOMMENDATIONS

### Special Fluid Operation

Below is list of water-based hydraulic fluids that have proven to be compatible with PF4300 series pumps:

- **Castrol** – Transaqua HC 10, HC 20, HT, HT2, SP
- **Houghton** – Aqualink HT804F, 300F
- **MacDermid** – Oceanic HW443, HW540, ECF, Pelagic 100M, 100H, 100HC

Mineral and phosphate ester fluids are also compatible with PF1300 series pumps and may allow for increased maximum pressures on some models.

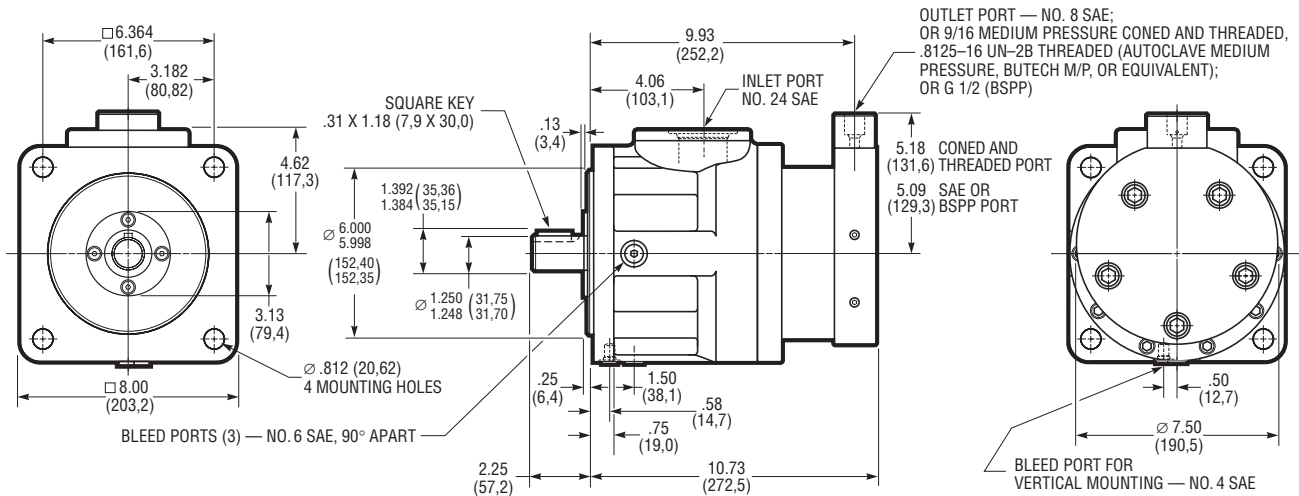
Because of the wide range of fluid characteristics, contact the Dynex Sales department to review an application operating with fluids not listed or those that fall outside of the *Hydraulic Fluid Viscosity Guidelines* table.

### Fluid Viscosity Specifications

Using fluid with the correct viscosity range is critical to component life.

For fluid conditions outside the ranges shown in the *Hydraulic Fluid Viscosity Guidelines* table, contact the Dynex Sales department.

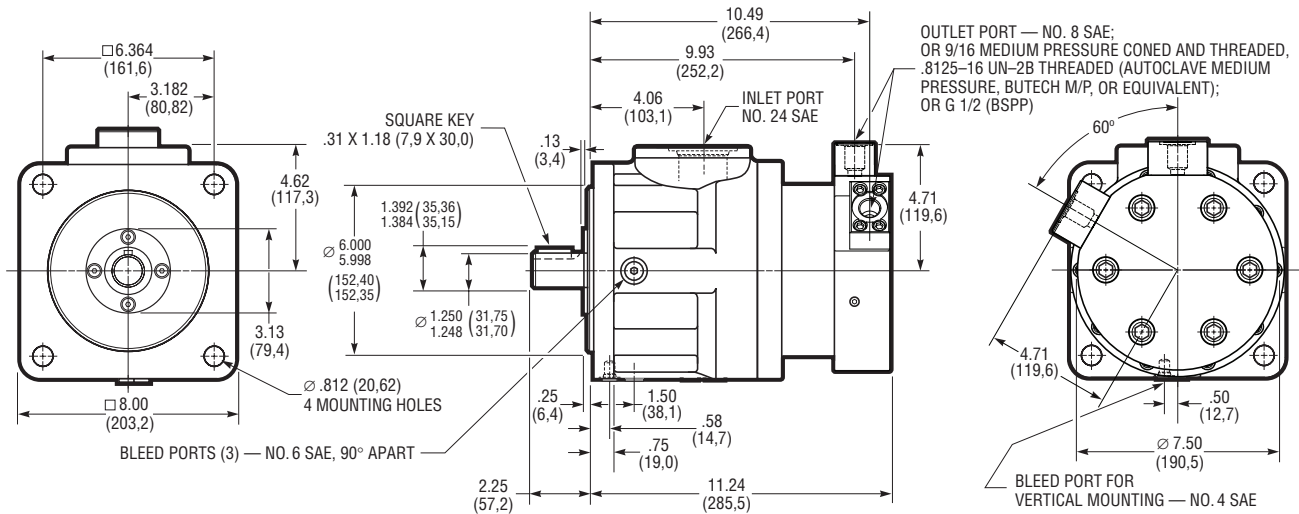
## FULL FLOW MODELS



## SPLIT-FLOW® MODELS

Split-Flow® provides multiple outlets from a single pump. Models with Split-Flow® covers efficiently supply two or more flows for multiple function circuits. Multiple outlet pumps can be used for synchronized actuator movement.

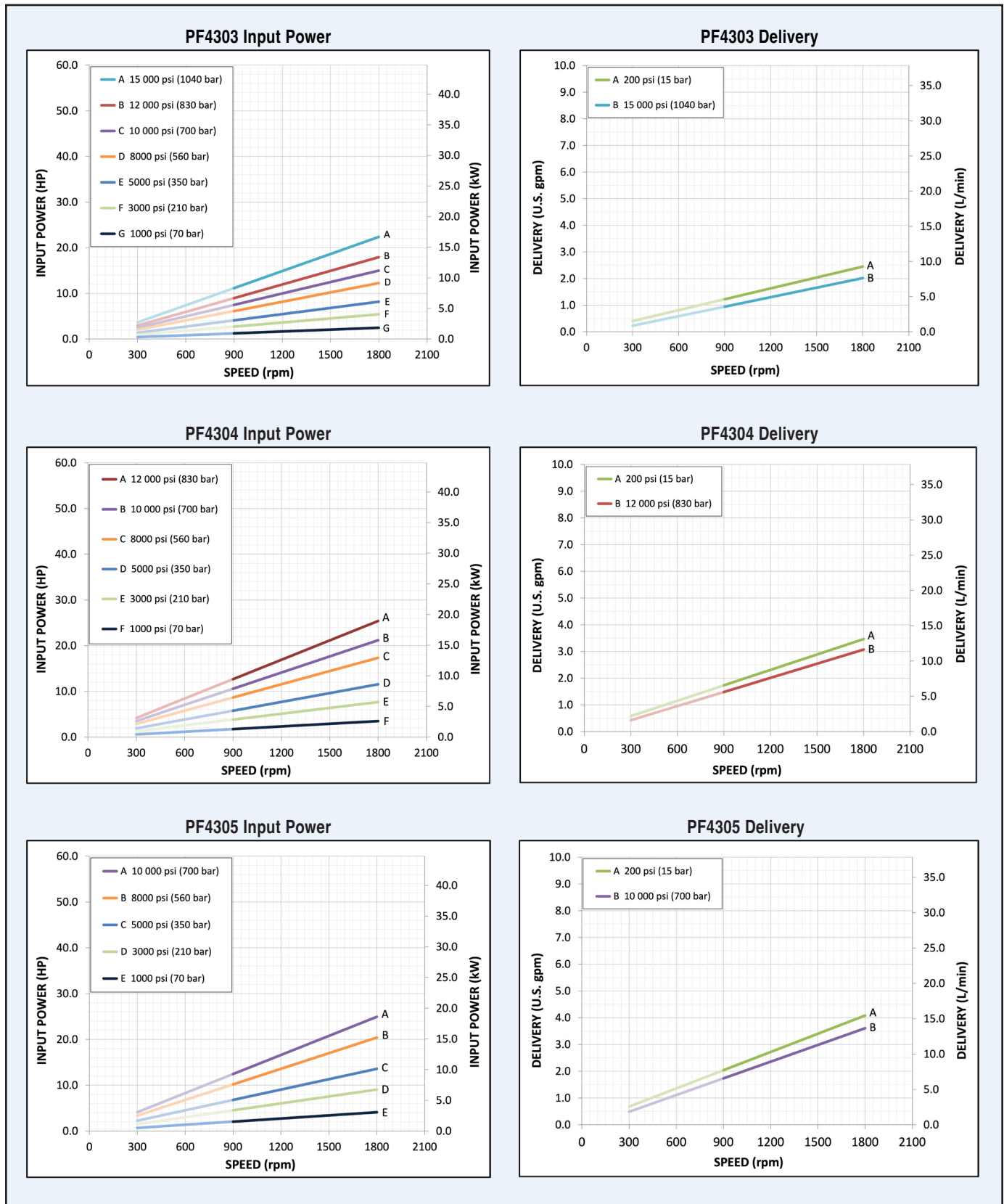
Piston outputs are grouped together in the cover with various piston flow splits available.



*Split-Flow (3+3) Three-piston output + Three-piston output*

## Typical Performance Curves<sup>①</sup>

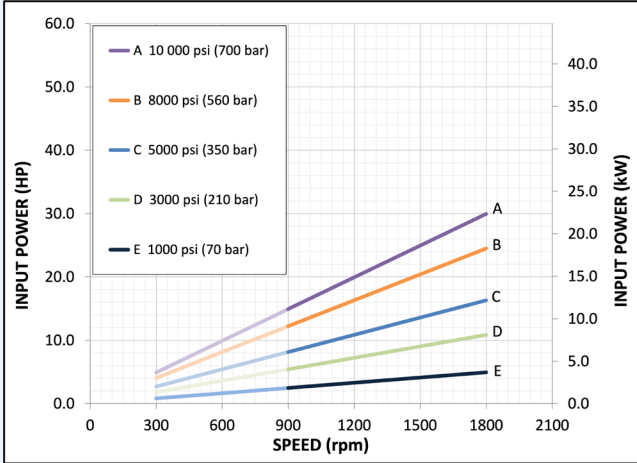
**IMPORTANT:** Typical performance curves are based on 33 SUS (1,9 cSt) and related to 1 atmosphere (29.92" Hg) water glycol fluid. Pumps may require pressurized inlet conditions at higher speeds, or with higher viscosity fluids. Failure to meet minimum inlet requirements will result in flow reduction. Refer to the table on page 2.



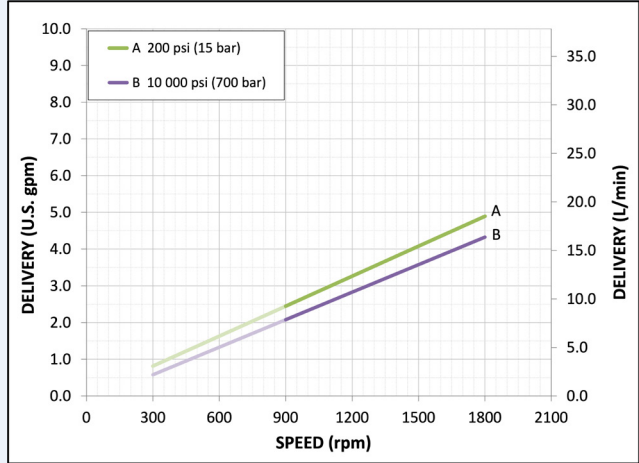
<sup>①</sup> Contact the Dynex Sales department for operation below 900 rpm.

# Typical Performance Curves<sup>①</sup>

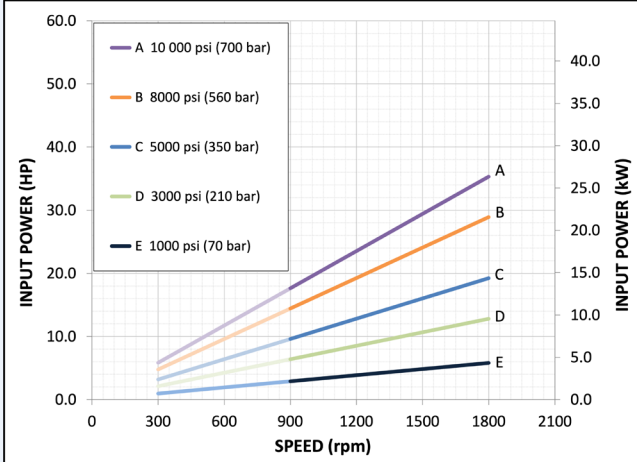
### PF4306 Input Power



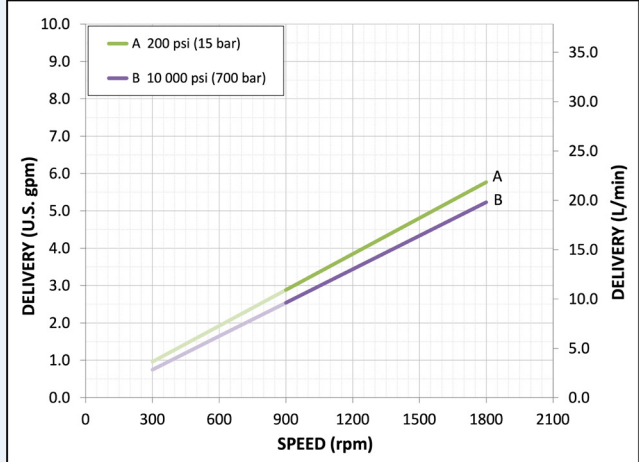
### PF4306 Delivery



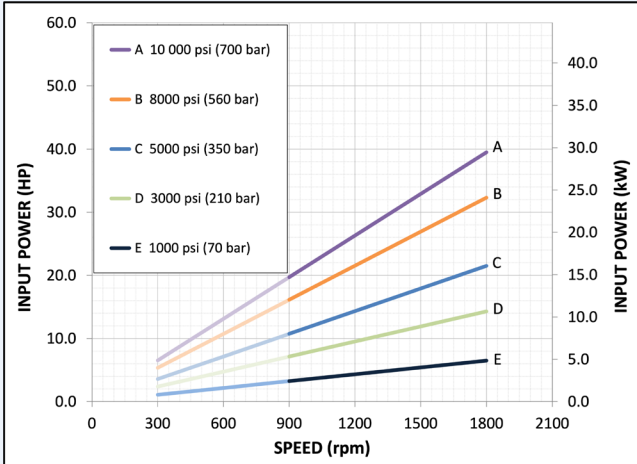
### PF4308 Input Power



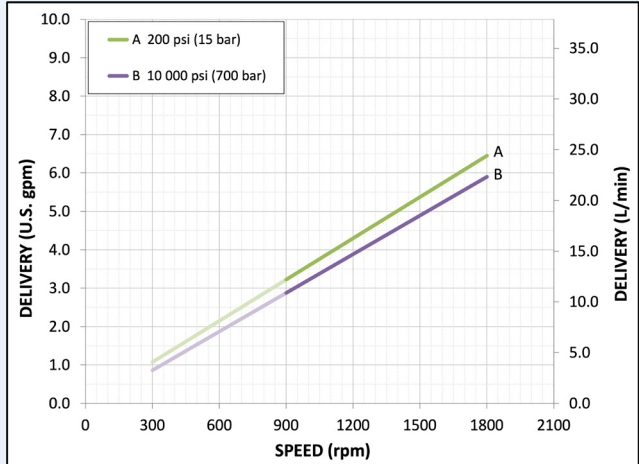
### PF4308 Delivery



### PF4309 Input Power



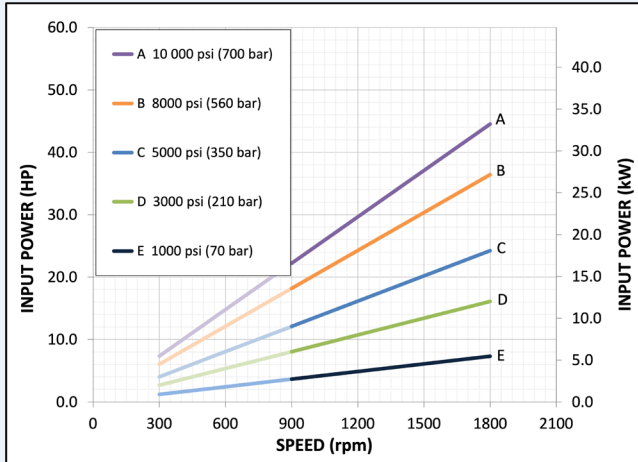
### PF4309 Delivery



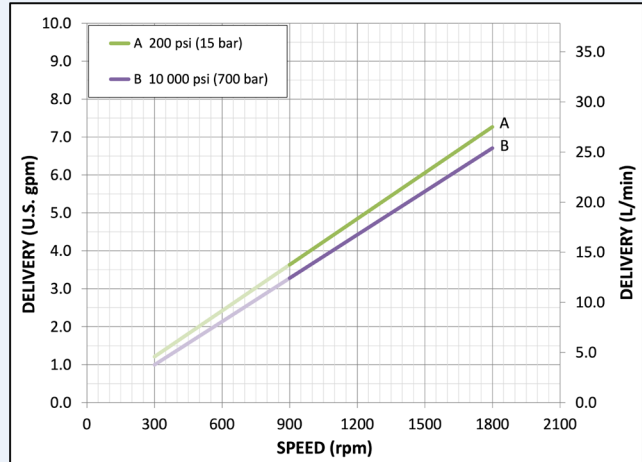
<sup>①</sup> Contact the Dynex Sales department for operation below 900 rpm.

# Typical Performance Curves<sup>①</sup>

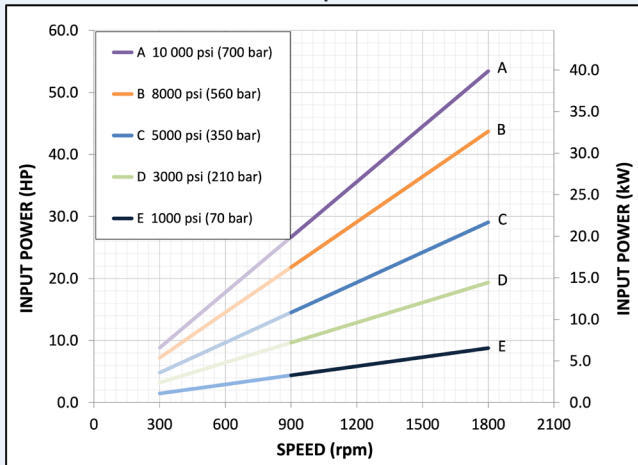
## PF4310 Input Power



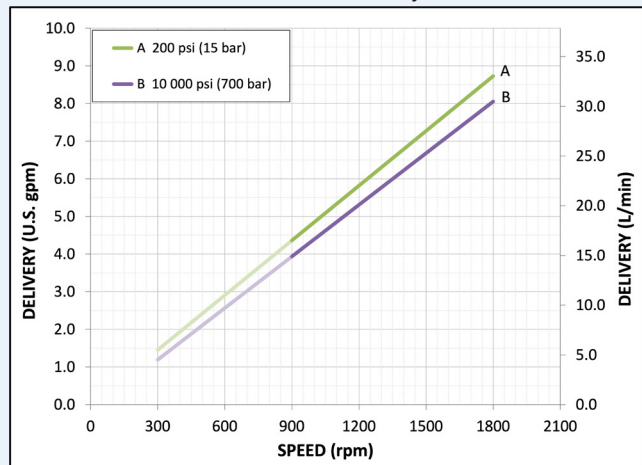
## PF4310 Delivery



## PF4312 Input Power



## PF4312 Delivery



<sup>①</sup> Contact the Dynex Sales department for operation below 900 rpm.

# TYPICAL MODEL CODE

PF43

03

H - S D

A

-

33

- 23

Pump Type	
PF43	Fixed Displacement Checkball Pump

Output Flow <sup>①②③</sup> (At 1800 rpm)	
03	Standard: 2.2 gpm (8,3 L/min) "H" option: 2.0 gpm (7,6 L/min)
04	Standard: 3.2 gpm (12,1 L/min) "H" option: 3.1 gpm (11,7 L/min)
05	Standard: 3.7 gpm (14,0 L/min) "H" option: 3.6 gpm (13,6 L/min)
06	Standard: 4.5 gpm (17,0 L/min) "H" option: 4.4 gpm (16,7 L/min)
08	Standard: 5.4 gpm (20,4 L/min) "H" option: 5.3 gpm (20,1 L/min)
09	Standard: 6.0 gpm (22,7 L/min) "H" option: 5.9 gpm (22,3 L/min)
10	Standard: 6.8 gpm (25,7 L/min) "H" option: 6.7 gpm (25,4 L/min)
12	Standard: 8.2 gpm (31,0 L/min) "H" option: 8.1 gpm (30,7 L/min)

① Output flows based on typical performance at maximum pressure. Refer to performance curves for flows at lower pressures and speeds.

② Models PF4303 and PF4304 have three pistons; models PF4305, PF4308, PF4309 and PF4310 have five pistons; models PF4306 and PF4312 have six pistons.

③ "H" option not available with "Q" option.

Design Number
33 - 23

Ports	
No Code	Inlet No. 24 SAE; Outlet No. 8 SAE <sup>①</sup>
A	Inlet No. 24 SAE; Outlet 9/16 Medium Pressure Coned and Threaded, .8125-16 UN-2B Threaded <sup>②</sup>
B	Inlet No. 24 SAE; Outlet G 1/2 (BSPP) <sup>③</sup>

① Not recommended for operation above 8000 psi (560 bar). Contact the fitting manufacturer for the pressure rating of the fitting.

② High pressure port uses Autoclave Medium Pressure, Butech M/P or equivalent fitting.

③ Outlet port uses British Standard Pipe Parallel fitting. Not recommended for operation above 10 000 psi (700 bar).

Split-Flow <sup>®</sup> Options	
No Code	Full flow from single outlet
Split-Flow <sup>®</sup> Cover Models: <sup>①</sup>	
33	Three-piston output + three-piston output

① Only available with six-piston models PF4306 and PF4312.

Seals	
D	Standard: Buna-N (Nitrile) with Polyurethane (Disogrin <sup>®</sup> ) o-rings in the cover
XD	Fluorocarbon (Viton <sup>®</sup> or Fluorel <sup>®</sup> ) with Polyurethane (Disogrin <sup>®</sup> ) o-rings in the cover and High Pressure Shaft Seal
XE	All EPR (Ethylene Propylene Rubber) with High Pressure Shaft Seal <sup>①</sup>
XV	All Fluorocarbon (Viton <sup>®</sup> or Fluorel <sup>®</sup> ) with High Pressure Shaft Seal

① Contact the Dynex Sales department for recommended operating conditions with EPR seals.

Drive Shaft	
No Code	Keyed, 1.250 inch (31,75 mm) diameter
S	SAE Spline, 1.248/1.247 inch (31,7/31,67mm) diameter standard SAE 14 tooth, 12/24 DP 30° involute spline

Operating Pressure	
No Code	Standard Pressure
H	High Pressure <sup>①</sup>
Q	Standard Pressure <sup>②</sup>

① Requires "A" or "B" port option.

② With improved suction capability. Maximum pressure 8000 psi (560 bar).



## USA Headquarters

770 Capitol Drive  
Pewaukee, WI 53072  
Tel: +1 (262) 691-0300  
Fax: +1 (262) 691-0312  
sales@dynexhydraulics.com



## Power Units & Systems

54 Nickerson Road  
Ashland, MA 01721  
Tel: +1 (508) 881-5110  
ashland@dynexhydraulics.com



## European Sales

Unit C5 Steel Close, Little End Road,  
Eaton Socon, St Neots,  
Cambs. PE19 8TT United Kingdom  
Tel: +44 (0) 1480 213980  
Fax: +44 (0) 01480 405662  
sales@dynexhydraulics.co.uk



## Middle East Sales

JAFZA 1, Tower A, 11th Floor  
Jebel Ali Freezone  
Dubai, UAE  
Tel: +971 547422353  
UAEsales@dynexhydraulics.com

*Specifications shown were in effect when published. Since errors or omissions are possible, contact your Dynex Sales representative or the Dynex Sales department for the most current specifications before ordering. Dynex reserves the right to discontinue products or change designs at any time without incurring any obligation.*

[www.dynexhydraulics.com](http://www.dynexhydraulics.com)